

Situational Awareness Light



SITUATIONAL AWARENESS LIGHTS

The stacked LED light tower allows multiple situations to be displayed simultaneously, signaling when an operator is available, on a call, in need of critical assistance and more.



- Lenses are visible from any direction and distance and multiple colors can light at the same time to indicate several equally relevant conditions.
- Mounting on the top cap maintains a consistent height regardless of varying console positions. You can also mount to the Slatwall Monitor Array or fixed slatwall extension, if preferred. Multiple pole lengths are available to dial in the desired height.
- All fixtures are fully modular and pre-wired for up to five colors (red, amber, green, blue, clear). If adding an additional lens color in the future, simply connect the preexisting wire, click the lens on, and you're good to go.

SITUATIONAL AWARENESS LIGHT ACCESSORIES

Maximize your Situational Awareness Light benefits with these optional accessories.



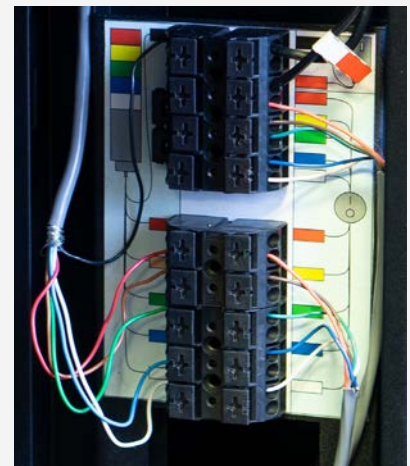
STATUS LIGHT SIGN

Steel-framed signs, with easy to remove covers on both sides, create instant recognition at a distance.



SUPERVISOR ALERT

Add a Supervisor Alert Switch at each position for immediate and unmistakable critical assistance requests. The back-lit toggle is available in multiple colors and sits within easy reach of the operator.



CONNECTION KIT

The Status Light Connection Kit powers your Status Light and makes wiring and switching easy.